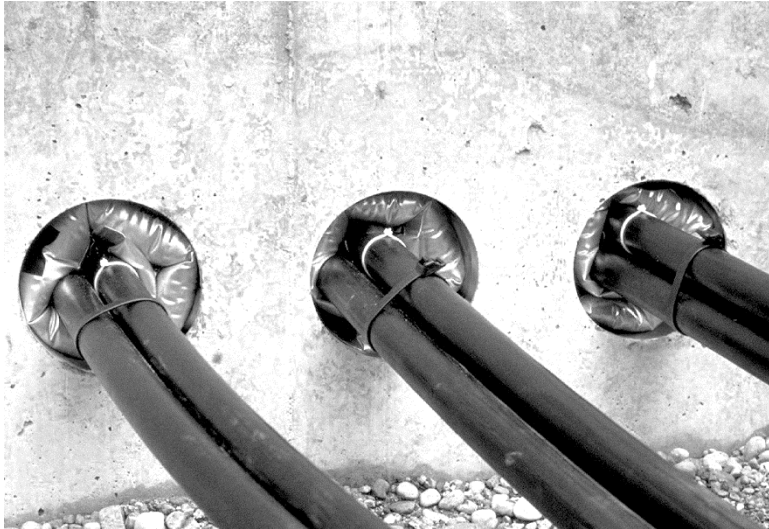


Inflatable Duct Sealing Systems



1. Scope

This standard covers the requirements for inflatable duct sealing systems.

This standard applies to the Seattle City Light (SCL) stock numbers shown in Section 2.

2. Application

Inflatable duct sealing systems are used on power cables to provide a watertight seal when used with plastic, concrete or steel ducting systems. It helps to prevent flooding in cable vaults, access manholes, substation basements, and customer feeds. Table 2 provides a selection guide.

Table 2. Inflatable Duct Sealing System Selection Guide

Number of Cables in Duct	Duct Inner Diameter Range (in)	Max. Cable or Cable Bundle Diameter (in)	Raychem Inflation Kit	SCL Stock No.	Clip Part No. / No. of clips	SCL Stock No.
0, 1, or 2	1.75 to 2.25	0.7 to 1.6	RDSS-60	737530	none	—
	2.50 to 3.00	1.5 to 2.2	RDSS-75	737531	none	—
	3.25 to 4.50	2.2 to 3.5	RDSS-100	737532	none	—
	4.75 to 5.00	3.8 to 4.1	RDSS-125	737533	none	—
3 or 4	1.75 to 2.25	0.5 to 1.4	RDSS-60	737530	RDSS-CLIP-75 (1)	737541
	2.50 to 3.00	1.3 to 2.0	RDSS-75	737531	RDSS-CLIP-75 (1)	737541
	3.25 to 4.50	2.0 to 3.3	RDSS-100	737532	RDSS-CLIP-100 (1)	737542
	4.75 to 5.00	3.6 to 4.9	RDSS-125	737533	RDSS-CLIP-125 (1)	737543
5, 6, or 7	1.75 to 2.25	0.3 to 1.2	RDSS-60	737530	RDSS-CLIP-75 (2)	737541
	2.50 to 3.00	1.1 to 1.8	RDSS-75	737531	RDSS-CLIP-75 (2)	737541
	3.25 to 4.50	1.8 to 3.1	RDSS-100	737532	RDSS-CLIP-100 (2)	737542
	4.75 to 5.00	3.4 to 3.7	RDSS-125	737533	RDSS-CLIP-125 (2)	737543

^a Inner Diameter

3. Requirements

Inflatable duct sealing system kits shall consist of an inflatable bladder of flexible metallic laminate and a sealing clip.

The system comes in different kits corresponding to the number of cables and the total cable diameter. The number of cables determines the system size and the number of clips to use.

Bladders seal vacant ducts and ducts containing up to two cables. Sealing three or more cables can be achieved by inserting a mastic sealant clip between the cables.

The clip is made from a high-temperature mastic mounted on an installation stick.

4. Packaging

Inflatable duct sealing systems shall be packaged to prevent damage during shipping, handling, and storage. Individual packages shall be legibly marked with:

- Manufacturer name
- Manufacturer part number
- Product description
- SCL stock number

Shipping containers shall be legibly marked with:

- Seattle City Light purchase order number

5. Issuance

Stock Unit: EA

6. Approved Manufacturers

Stock No.	Manufacturer	Catalog No.
737530	Raychem/TE Connectivity	RDSS60
737531	Raychem/TE Connectivity	RDSS75
737532	Raychem/TE Connectivity	RDSS100
737533	Raychem/TE Connectivity	RDSS125
737541	Raychem/TE Connectivity	RDSSCLIP75
737542	Raychem/TE Connectivity	RDSSCLIP100
737543	Raychem/TE Connectivity	RDSSCLIP125

7. Sources

SCL Stock Catalog page 70-52; January 23, 2018

Lu, Curtis; SCL Standards Engineer and originator of 7201.65

Raychem Rayflate Duct Sealing System RDSS for Power Cables; TE Electronics
Raychem GmbH, EPP 05569, April 2013

www.te.com