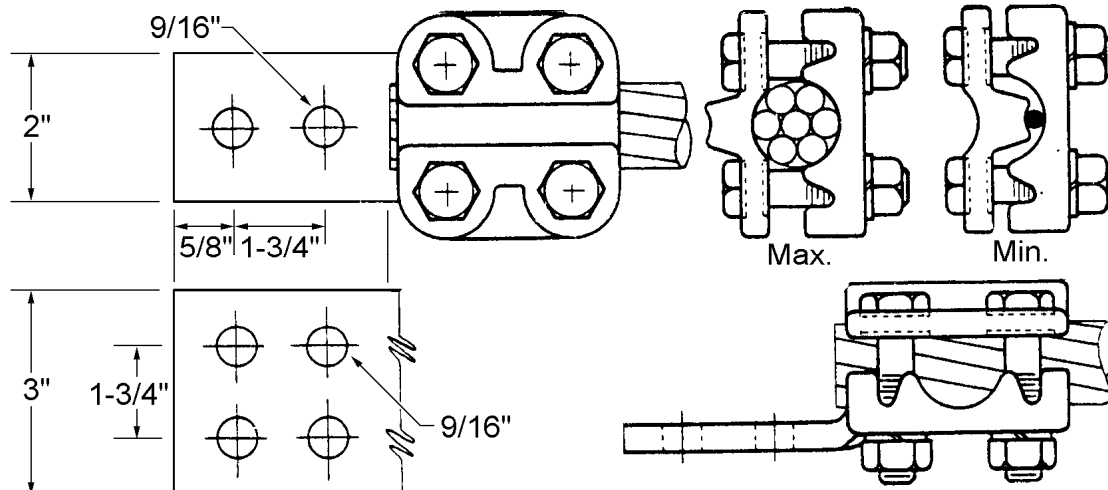


MATERIAL STANDARD**LUGS, TERMINAL CONNECTOR
UNIVERSAL AND TUBE TYPE**

Terminal Connector Lugs of the Universal type shall be of the general configuration shown and shall be forged or cast from high-conductivity copper alloy. The bolts, nuts, and lock washers shall be high-strength silicon bronze. The connectors shall meet the applicable requirements of ANSI/NEMA CC-1, *Electric Power Connectors for Substations*.

Reference: ANSI/NEMA CC-1

Stock Unit: EA

Stock No.	Range		Pad Holes	Approved Manufacturers					
	Cable	IPS		Anderson	Burndy	Dossert	Fargo	*Homac	S. States
667786	#2 Sol-800 kcmil	1/4" - 3/4"	2	SF-1-B2-3	—	—	—	7MK-80-2N	—
661241	—	1-1/4"	4	STF4-12C	NA16-4N	TP 125-4N	T3A4N	KL-G-4N	UA-25-4
661244	—	1-1/2"	4	STF4-14C	NA17-4N	TP 150-4N	T4A4N	KL-H-4N	UA-26-4

*Frankel acceptable.

ORIGINATOR	STANDARDS COORDINATOR	STANDARDS SUPERVISOR	UNIT DIRECTOR
<i>Jim S. Horn</i>	<i>Charles L. Shaffer</i>	<i>John C. Skinner</i>	<i>Harold J. J.</i>